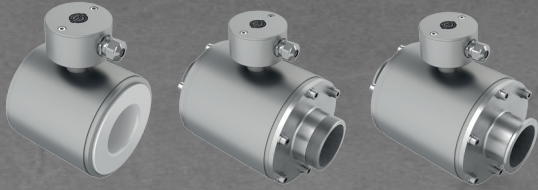


FLOW 38



Inductive flowmeter with display unit in compact or separate version.

The flow meter is designed for a wide range of fluid measurements in various industries. Various process connections such as flange, sandwich (waffle), threaded and dairy fittings (DIN 11851) or clamp types are available.

Flowmeter is possible manufacture in full stainless steel construction or in structural steel construction with polyurethane coating. The evaluation unit is made in three versions. It includes the standard design (head) and the unit is also made in front and panel designs. It is advantageous in the compact front version that the evaluation unit (display unit) is placed from the front part of the sensor and in case of the separated version, the display unit can be mounted in DIN rail. The panel mounted electronics offers the installation of the display unit in the electric box door.



MAIN MERITS

- Extensive variability of process connection
- Possibility of the constructional length made to customer needs
- Possibility of the sensor made in full stainless steel design
- Big dynamic measuring range
- High measurement accuracy and repeatability
- Wide choice of materials for liners and electrodes
- Very simple and intuitive operation
- Possibility of flow monitoring function (flow switch)
- 350° swivel display for comfortable reading

Power	230 VAC (50/60 Hz), 24 VAC/VDC with polarity reversal protection
Input power	4.6 VA
Type of electronics	Head (H – standard), front (F), panel (P) versions
Design	Compact (Tmax 90 °C), separated (standard cable length 3 m)
Diameter nominal	DN 6÷400
Lining material	Rubber (hard, soft, with potable water test certificate), PTFE, PFA, Ceramics, PEAK, PVDF
Electrode material	CrNi steel DIN 1.4571, Hastelloy C4, Titanium, Tantalum, Platinum
Sensor material	stainless steel and structural steel with polyurethane coating
Process connection	Sandwich, Flanged DIN (EN1092), Threaded (EN1092), Food grade (DIN 11851 fitting, clamp)
Pressure	PN10, PN16, PN25, PN40
Max. temperature of medium	170 °C according to the lining
Min. conductivity of the measured fluid	20 µS (at a lower conductivity, upon agreement with the manufacturer)
Flow meter accuracy	up to 0.5 %, repeatability up to 0.2 %
Display unit	LCD 2x 16 characters
Outputs	Impulse/flow switch (max. 400 Hz), 4 ÷ 20 mA, RS485 (M-BUS/Mod-Bus protocol)
Flow sensor degree of protection	IP65, IP67, IP68
Electronics degree of protection	IP67

