

**RACCORDI CON ATTACCO A FORCHETTA**  
**FITTINGS WITH FORK COUPLING**  
**RACORES CON CONEXION DE HORQUILLA**

Raccordo a "T" con attacco femmina  
 Tee fitting with female connection  
 Racor en "T" con conexión hembra

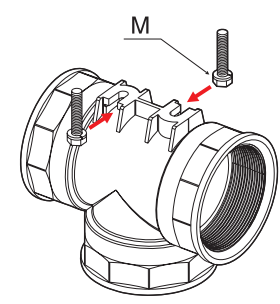


Forchetta  
Fork  
Horquilla

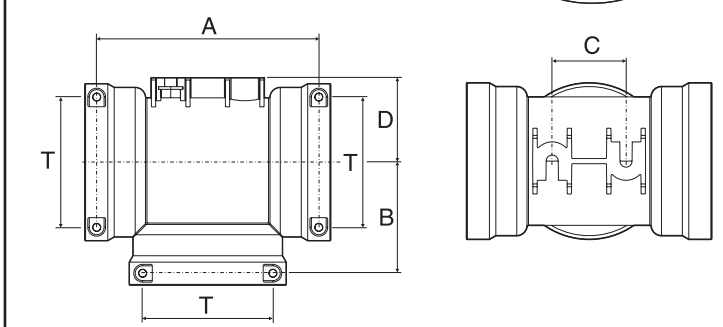
Il raccordo può essere fissato ad una superficie, mediante due viti a testa esagonale da inserire nelle asole poste sulla parte superiore del raccordo.

The union is fastened to a surface with two hexagonal-head screws inserted into slots on the upper part of the union.

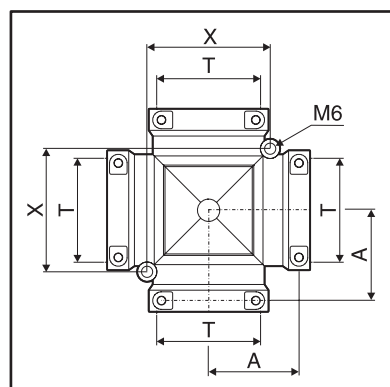
El empalme puede ser fijado a una superficie por medio de dos tornillos de cabeza hexagonal para introducir en los ojales colocados en la parte superior del empalme.



COD. CODE Cód.	T	A (mm)	B (mm)	C (mm)	D (mm)	M		COD. CODE Cód.
▶ 139 033	T3	63	32	14	25	M5	10	010003
139 044	T4	71	36	14	27	M5	10	010004
139 055	T5	81	41	16	32	M6	10	010005
139 066	T6	97	49	24	35	M6	10	010006
139 077	T7	113	57	32	41	M6	5	010007
139 099	T9	150	75	50	57	M8	5	010009



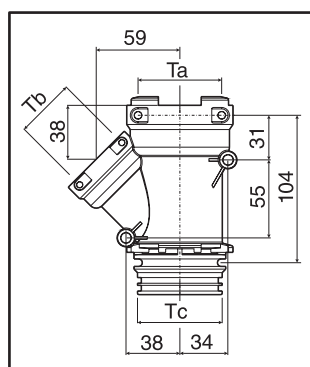
Raccordo 4 vie a 90° con attacco femmina  
 90° 4-way fitting with female connector  
 Empalme de 4 vías a 90° con toma hembra



Forchetta  
Fork  
Horquilla

COD. CODE Cód.	T	A (mm)	X (mm)		COD. CODE Cód.
▶ 159 033	T3	32	44	10	010003
159 077	T7	57	77	5	010007

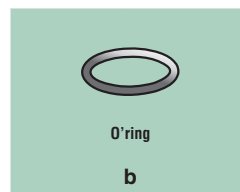
Collettore a 3 vie  
 3-way manifold  
 Colector de tres vías



Forchetta  
Fork  
Horquilla  
a



Forchetta  
Fork  
Horquilla  
b



O'ring  
b

COD. CODE Cód.		Ta	COD. CODE Cód.	Tb	COD. CODE Cód.	Tc	COD. (EPDM)	COD. (Viton®)
179 275	5	T7	010007	T5	010005	T7	G11017x2	G11017V x2