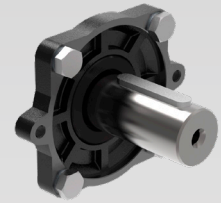




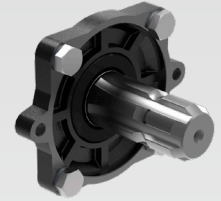
GAMMA



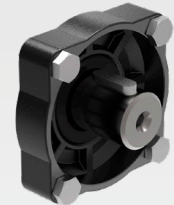
TS 1C



TS 2C

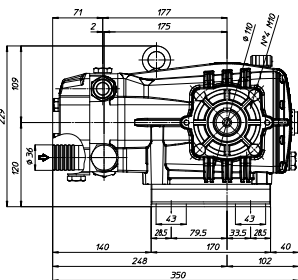


TS GR

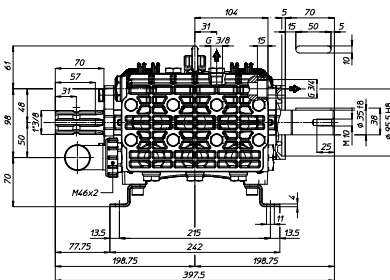


RPM	CODICE CODE	MODELLO MODEL	PORTATA FLOW				PRESSIONE PRESSURE		POTENZA POWER		PESO WEIGHT	PRESA DI FORZA SHAFT TYPE
			NOM.				bar	PSI	HP	kW		
			l/min	GPM	l/min	GPM					Kg	
600	837700	GAMMA 62 TS 1C	67.9	17.9	67.0	17.7	50	725	8.6	6.4	22.2	TS 1C 35 mm 1 1/8 Scanalato / Splined
	837600	GAMMA 62 TS 2C	67.9	17.9	67.0	17.7	50	725	8.6	6.4	22.2	TS 2C 1 1/8 Scanalato / Splined
	837800	GAMMA 62 TS GR	67.9	17.9	67.0	17.7	50	725	8.6	6.4	22.2	TS GR 35 mm Corto / Short 1 1/8 Scanalato / Splined

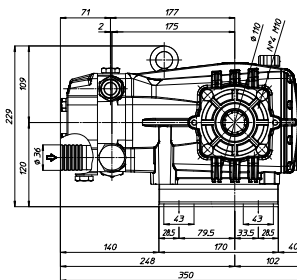
Dimensioni d'ingombro (mm) - Overall Dimensions (mm)



TS 1C



TS 2C



TS GR

