

Model 1100 Series Pumps



New from SHURflo, the rugged 1100 Series General Utility Transfer Pump is a highly-efficient, 12VDC, Positive-displacement pump. This Self-Priming, Chemically-Resistant pump offers 10+ GPM flow with a surprisingly low amp draw. The 1100 Series features a 5-Chamber design with Co-Molded Pistons for increased durability, and is equipped with a 12' Power Cord with Inline Fuse and Battery Clips for maximum flexibility. The pump features a 2" inlet port (reducer available) and a 1" outlet port. For a high-flow, transfer pump that can efficiently handle a wide range of viscosities, the 1100 Series is the pump of choice.

Contact SHURflo to find out more about the 1100 Series General Utility Transfer Pump, and our full line of innovative fluid handling products.

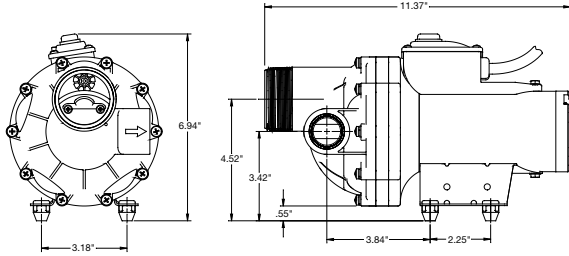
- ▶ **Positive displacement pump ideal for high flow fluid transfer applications**
- ▶ **Self-priming up to 12 feet [3.6m]**
- ▶ **Can run dry without damage**
- ▶ **Available in both EPDM and Viton® versions**
- ▶ **Easily field repairable**
- ▶ **Splash-proof on/off switch**
- ▶ **Internal bypass for pump protection**
- ▶ **Ability to handle low to high viscosity liquids**

SHURflo®

Model 1100 Series Pumps

The 1100 Series pump is ideal for high-flow transfer applications. The 12' power cord offers maximum flexibility for mounting choices. The pumps can be mounted in any position.

- ▶ Standard 8000-Style Baseplate.
- ▶ Long Life Design.
- ▶ Field Repairable, Replacement Parts Available.
- ▶ Integral Bypass Prevents Overpressure Condition.



Flow / Amp Data

PSI	GPM	LPM	AMPS
Open	10.7	40	9.3
5	10.1	38	10.3
10	8.7	33	12.3
15	7.6	29	13.9

* Based on water; 3ft inlet lift (12.7 VDC)

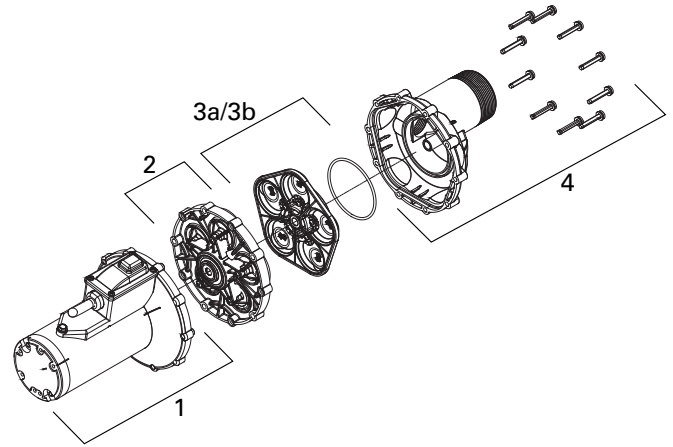
Materials of Construction:

Upper HousingPolypropylene
 Valve HousingPolypropylene
 Valves (1100-7XX-XXX)EPDM
 Valves (1100-5XX-XXX)Viton®
 O-ringViton®
 DiaphragmSantoprene™
 Lower HousingAluminum (*not in fluid path*)
 Pumphead ScrewsStainless Steel (*not in fluid path*)

Note: Shurflo reserves the right to update specifications, change prices, or make substitutions without notice.

Technical Specifications:

Design	Positive Displacement 5 Chamber Diaphragm Pump
Motor	Permanent Magnet
Voltage	12 Volt DC w/Integral Thermal Breaker (Auto Reset)
Duty Cycle	Intermittent Duty
Liquid Temperature	140°F (60°C) Max
Weight	11 Lbs. [4.99kg]
Prime	Self-priming up to 12 ft. [3.6m]
Standard Ports	2" MNPT Inlet, 1" FNPT Outlet



Parts List

ITEM	KIT PART NO.	DESCRIPTION
(1)	94-718-00	Motor Assembly Kit
(2)	94-719-00	Diaphragm/Lower Housing/ Drive Assembly Kit
(3a)	94-720-00	Valve Housing Assembly Kit (EPDM)
(3b)	94-720-05	Valve Housing Assembly Kit (Viton®)
(4)	94-721-00	Upper Housing Assembly Kit



* ISO 9001 Registered Site

SHURflo®

Form # MS-040-104 Rev. A 06/07
 ©2003-2007 SHURflo, LLC All Rights Reserved.

Headquarters*

Mailing: 5900 Katella Ave.
 Cypress, CA 90630
Shipping: 5900 Katella Ave., Bldg. C
 Cypress, CA 90630
 Tel: (562) 795-5200 or (800) 854-3218
 Fax: (562) 795-7564
www.shurflo.com

East

52748 Park Six Court
 Elkhart, Indiana 46514-5427
 Tel: (800) 854-3218
 Fax: (574) 264-2169

Europe

SHURflo Limited
 Unit 5, Sterling Park
 Gatwick Road, Crawley
 West Sussex, RH10 9QT, UK
 Tel: 44-(0) 1293-424000
 Fax: 44-(0) 1293-421880